

Forced Convection upon Heat Sink of AL-Cu for Design Optimization by Experimental and CFD Analysis for Cooling of ICs in CPU



Srinivas. D, S. Ramamurthy, Juhi Ansari

Abstract: A heat sink device is used with specific power input at 100V and 20W by the heater attached at the base plate of copper and then obtaining the average temperature of Heat sink by the help of 10 thermocouples. Two specimens of heat sinks were designed and were tested for mass flow rate and heat transfer coefficient. With base of 1.5mm & 2.5mm tip thickness and another specimen with dimensions as tip 0.5mm and 1.00mm base thickness are used. By experimenting and CFD simulations, optimization of heat sink design was done. Then correlation and Validation for both the specimen was done and were found satisfactory results.

Keywords- Base plate, Cooling fan, CFD simulation, Heat sink, Heat dissipation, IC's, Fin configuration, Thermocouples.

I. INTRODUCTION

In modern and recent advances in the science & technology, especially in the electronics and computer application area a lot of advancements has taken place in Electronic cooling in CPU. Also with advent, few drawbacks are also seen in operations & application of electronic cooling in CPU. Recent advances using with compact space for computers, heat dissipation from IC's has been a complex phenomenon. Hence by using easy design & fabrication, experimental calculations and by simulation we can overcome the problems. Software simulations correlation was done for better design and performance of the heat sinks. As stated earlier, these metal foams not only possess desirable properties of the bulk metal such as corrosion resistance, acceptance of coatings, and high electrical and thermal conductivity, but also qualities such as a low density, high strength-to-weight ratio, high porosity, and extremely large surface-area-to-volume ratio. Wirtz et al. (1994) [1] experimentally studied the effect of flow bypass on longitudinal fin heat sinks. They evaluated inter-fin velocity from measured values of fin heat transfer coefficients and used these results to derive a correlation for inter-fin velocity in terms of Reynolds number as a function of the free stream Reynolds number and fin density. Yuan et al. (1996) [2] studied flow bypass effects on straight fin heat sinks in a rectangular duct by computational fluid dynamics modelling.

Revised Manuscript Received on December 30, 2019.

* Correspondence Author

Srinivas. D, Prof and Head mechanical engg, Research Scholar, JAIN, Bengaluru.

S. Ramamurthy, 2Prof at R&D, CMET, JAIN, Bengaluru,

Juhi Ansari, Asst prof, E&C, KCT Engg college, kalaburagi & Research scholar VTU, Belagavi, Karnataka..

© The Authors. Published by Blue Eyes Intelligence Engineering and Sciences Publication (BEIESP). This is an [open access](http://creativecommons.org/licenses/by-nc-nd/4.0/) article under the CC BY-NC-ND license (<http://creativecommons.org/licenses/by-nc-nd/4.0/>)

The computational model accuracy was verified by excellent agreement with experimental data of a test problem. Simons and Schmidt (1997) [3] proposed a simple hydrodynamic model to predict the inter-fin velocity of a plate fin heat sink by applying mass and momentum balances between fins and bypass area by considering negligible pressure drop in the bypass area, without showing their procedure to calculate pressure drop inside the heat sink. Sinks may vary significantly as far as the design, material or the fins are concerned. However, they are chosen in order to suit the usage of each system. A lot of systems use a forced flow regime due to the fact that quite fast cooling of the electronic devices is needed. Sultan, [4]; R Mohan and P Govindarajan, [6], Springer, Journal of mechanical science and technology, & KSME.

II. EXPERIMENTAL SETUP AND PROCEDURE

The material for fins or Extended surfaces used are a combination of Aluminium as fins and Copper as base plate material. Two specimens were prepared with tapered fins of Aluminum & base plate material of copper. One specimen of dimensions 40mm x 50mm x 5mm and second specimen with dimension of 40x50x2.0mm is prepared. A small heater is attached at the base of copper plate. Both the materials have been machined carefully for the required dimensions. Silicon compound and adhesive gel are used to attach the fins to the base plate. Aluminum tapered fins in 4 numbers are fixed to the copper plate. The two specimens with fins of base thickness 2.5mm & tip thickness 1.5mm and 1mm base and 05mm tip thickness of fins respectively fixed. To regulate the heat a centrifugal blower is fixed above the fins horizontally with flow rate of 90 CFM, with radius of fan diameter 90mm. The temperatures are measured on heat sink by ten (10) J type of thermocouples. The position of thermocouples are at 10mm from the base of fin on heat sink, Each fin consist of two thermocouples, overall thermocouples are 08 on fins. The copper base plate is fixed with 02 thermocouples at centre to measure the base plate temperature. Hence, a total of 10 thermocouples are fixed on the heat sink. Heat is supplied to the heat sink heater with constant power of 20W, with steady state and even assumed that the change in maximum temperature was minimum than $\pm 10^{\circ}\text{C}$ for a time span of 4 minutes. A voltmeter, wattmeter & temperature indicator were connected to measure the required parameters. Steady temperature of 50°C for heat sink is obtained with surrounding temperature as 38°C .

Both the specimen are as shown below in figure-1a&b.and the dimensions used are given in table 1 &2.

Figure 1: Heat sink specimen (a) Without holes (b) With holes

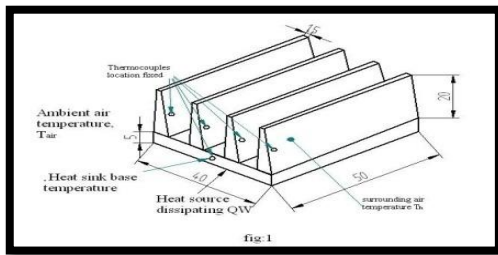


fig1(a)

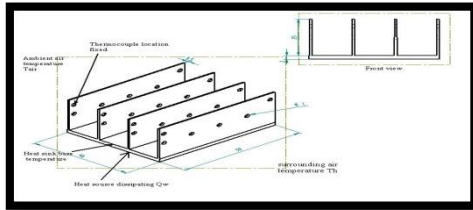


Fig 1 (b)

Table1:Dimensions of the heat sink with holes

Fin Length, L_f (mm)	Fin Height H_f (mm)	Fin Width W_f mm
50	20	40
Fin Number N	Thickness of fin at tip t_{ft} (mm)	Fin -to- Fin distance ξ (mm)
04	0.5	15
Base thickness t_b (mm)	Base Fin Thickness t_{fb} (mm)	Holes On Sinks mm
2.0	1	of 2mm diameter

Table 2:Dimensions of the heat sink without holes

Fin Length, L_f (mm)	Fin Height H_f (mm)	Fin Width W_f mm	Fin Number N	Thickness, of fin at tip t_{ft} (mm)	Fin -to- Fin distance ξ (mm)	Base thickness t_b (mm)	Base Fin Thickness t_{fb} (mm)
50	20	40	4	1.5	7	5	2.5

Table-3: comparison of experimental and analytical values obtained during this research work.

Fin Configuration	Mass flow rate (kg/s)		Heat transfer coefficient (W/m ² K)	
	Experimental	Analytical	Experimental	Analytical
Without Holes	0.0495	0.0492	22.7698	22.086
With 8 Holes	0.0495	0.0493	22.7702	21.859
With 12 Holes	0.0495	0.04926	22.7745	22.319
With 16 Holes	0.0495	0.04917	22.7812	21.642

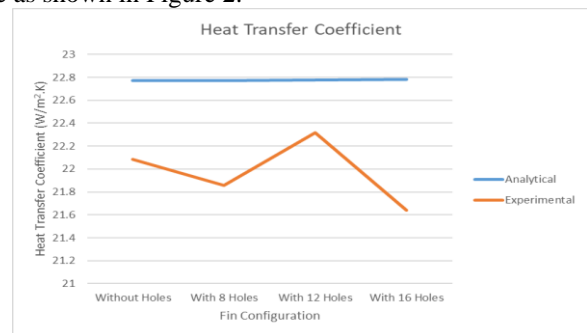
Table:3

4.1 CFD ANALYSIS:

CFD analysis of the experimental setup was conducted as per the conditions used in the experimentation. The heat sink model and the fluid domain was generated using CATIA V5 which was exported to the Fluent component in the ANSYS solver. The inlet velocity was calculated from the fan flow rate and the temperature of the heat sink was kept at a steady 50°C. The analysis was performed for four models as given below.

- a) Heat sink without holes
- b) Heat sink with 8 holes
- c) Heat sink with 12 holes
- d) Heat sink with 16 holes

After the analysis, the three models with holes were compared to get one with the best performance. The velocity profile obtained from CFD analysis of the specimen are as shown in Figure 2.



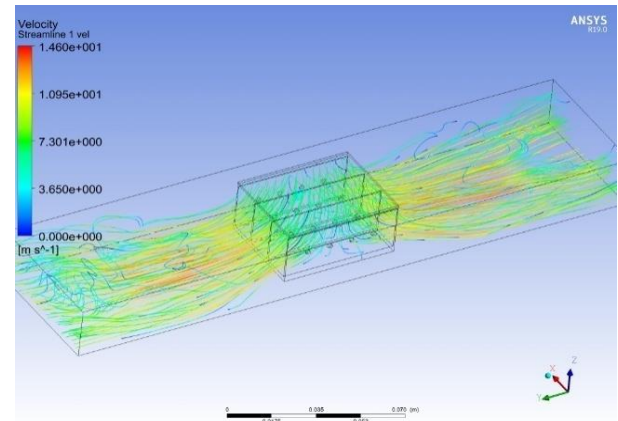
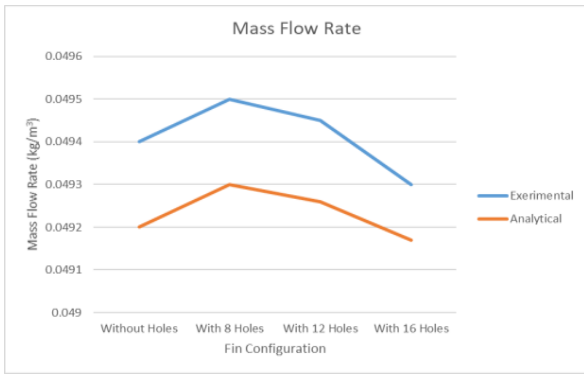
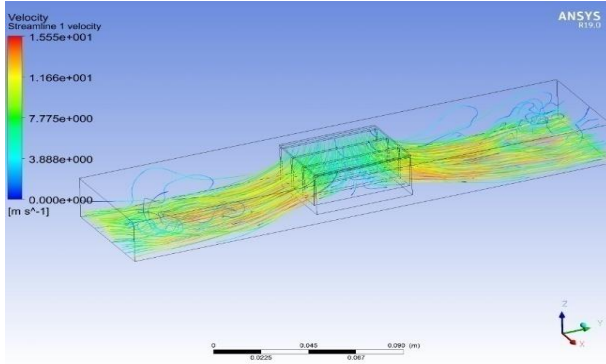
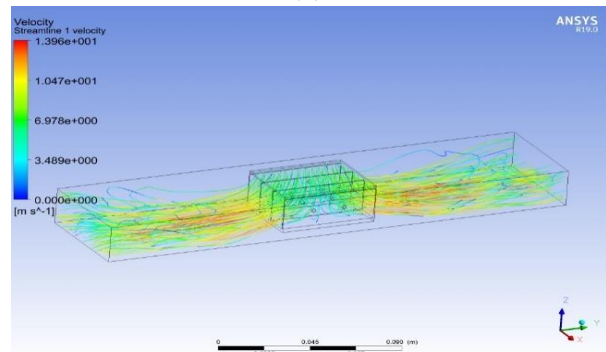


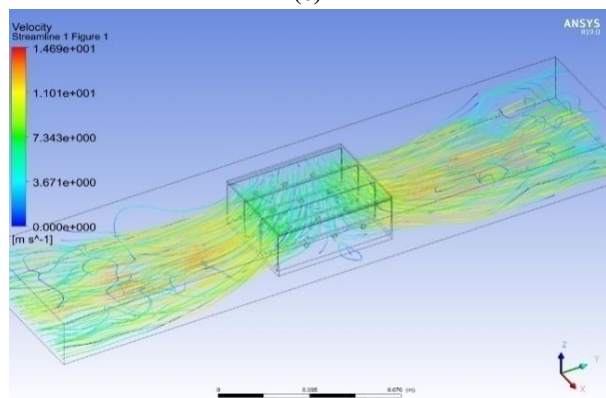
Figure 2: Velocity Profile of the heat sink (a) without holes (b) with 8 holes (c) with 12 holes (d) with 16 hole



(b)



(c)

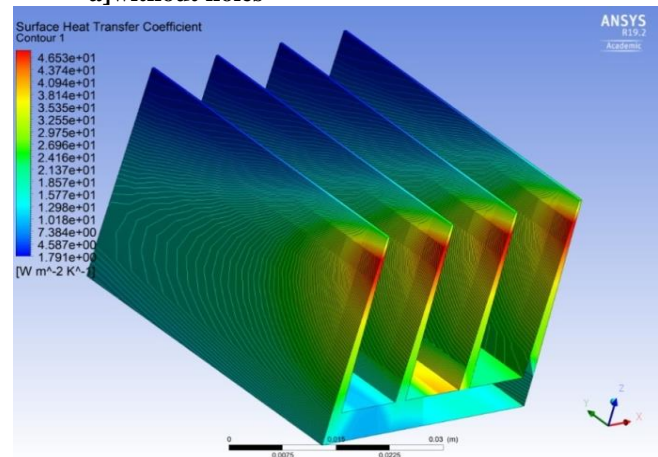


(d)

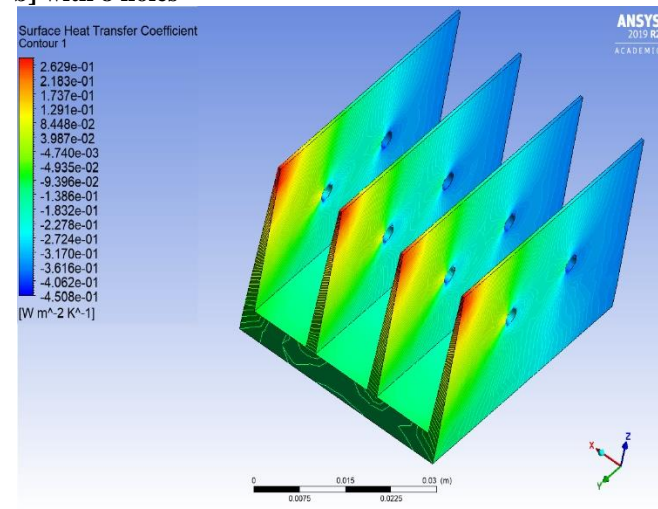
CFD ANALYSIS OF ALL FOUR SPECIMENS SHOWING.

HEAT TRANSFER COEFFICIENTS

a] without holes

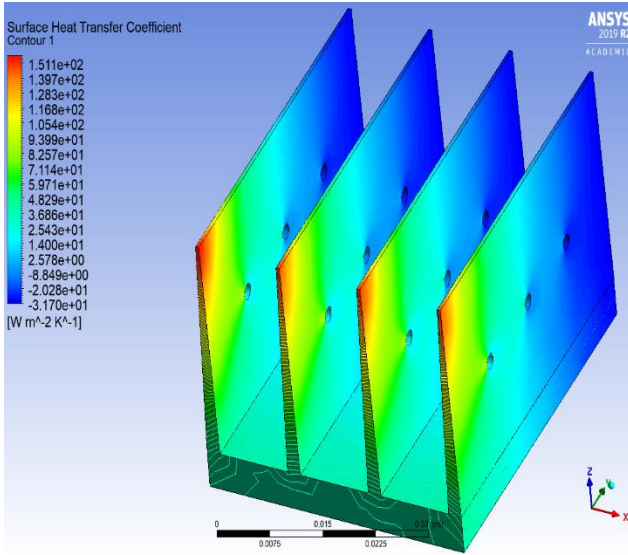


b] with 8 holes

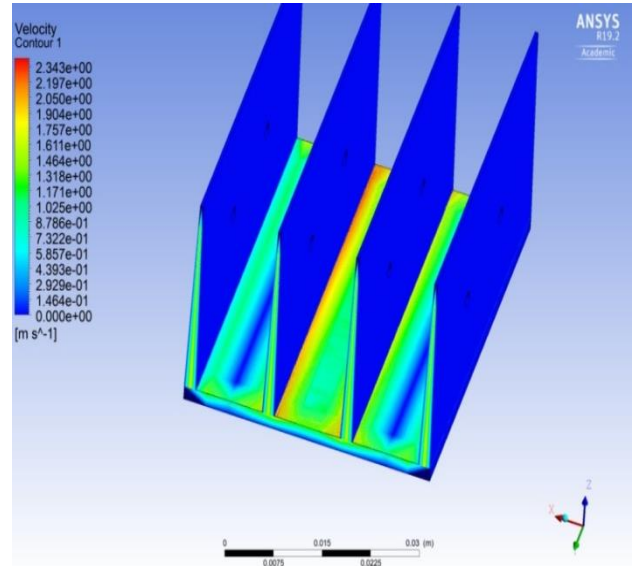


c] with 12 holes

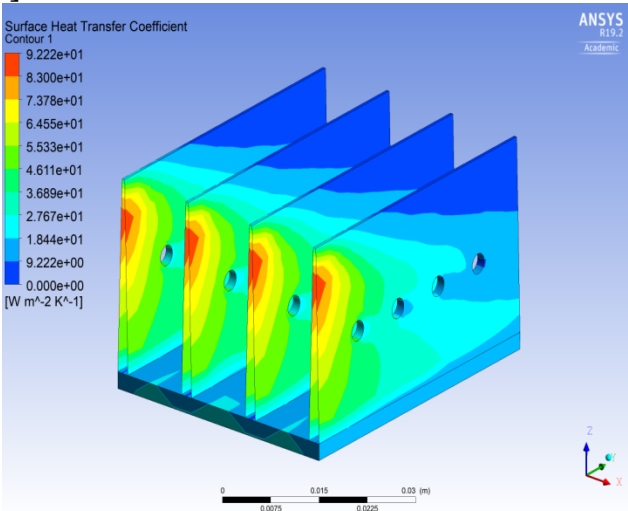
Forced Convection upon Heat Sink of AL-Cu for Design Optimization By Experimental and CFD analysis for cooling of ICs in CPU



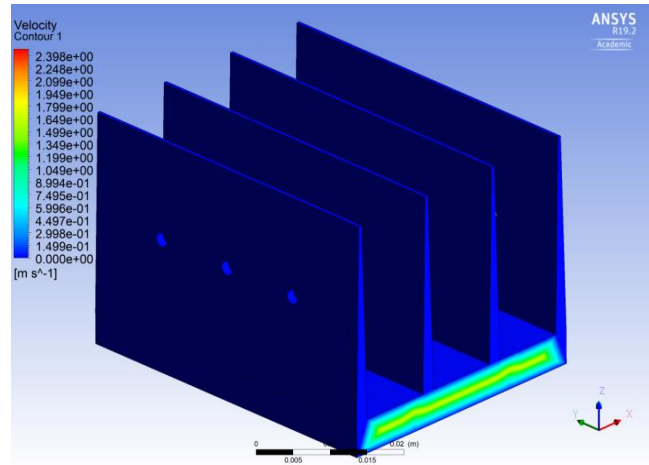
B] WITH 8 HOLES



d] with 16 holes

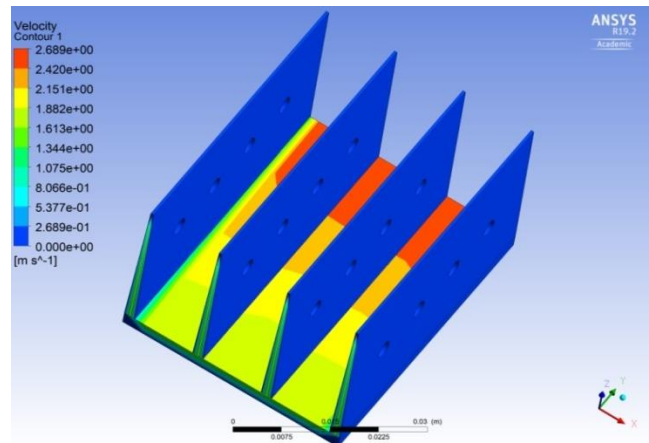


C] WITH 12 HOLES

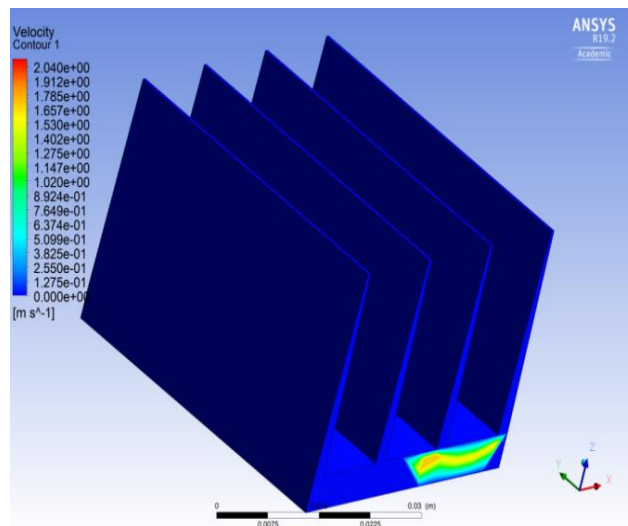


CFD VELOCITY PROFILES OF ALL HEAT SINKS

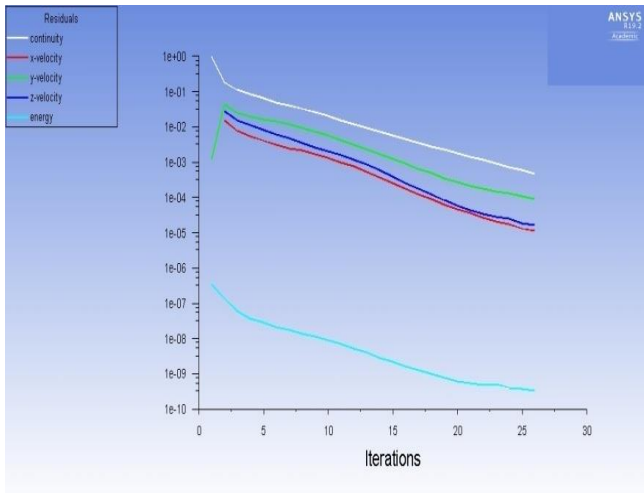
D] WITH 16 HOLES



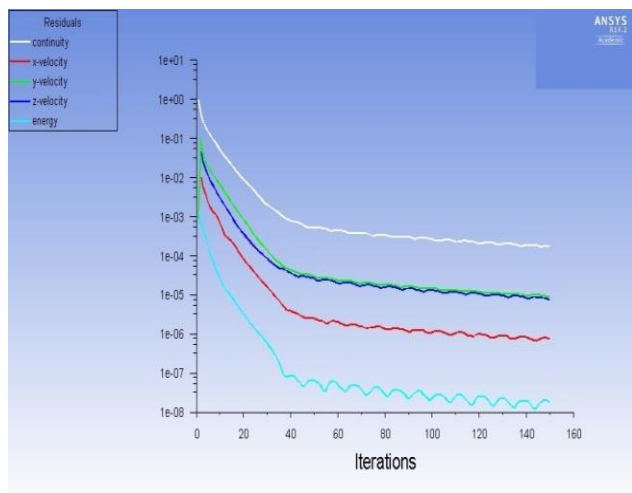
A] WITHOUT HOLES.



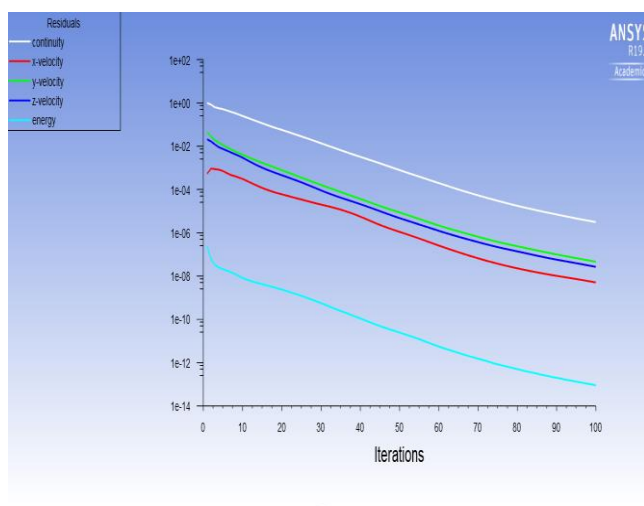
VELOCITY PROFILES CURVES OF ALL HEAT SINKS.



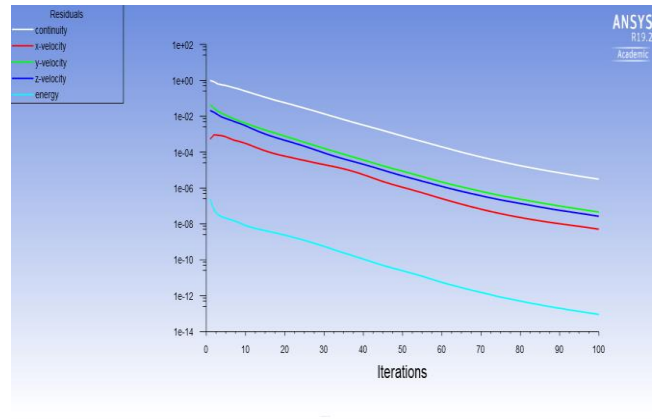
A] WITHOUT HOLES



B] WITH 8 HOLES



C] WITH 12 HOLES



D] WITH 16 HOLES

III. CONCLUSIONS

The main focus of this research work is to compare the heat transfer between heat sinks of different configurations. This was achieved by comparing four different configurations i.e., Heat sinks without holes, with 8 holes, with 12 holes and with 16 holes. The heat transfer co-efficient obtained through experimentation and CFD analysis indicated that the theoretical model selected for analysis was similar to the experimental model and the values are in close agreement with each other with a very small difference between 1-1.5%. **FINALLY HEAT SINK WITH 12 HOLES WAS SEEN AS OPTIMUM VALUE.**

REFERENCES.

1. Wirtzet al. (1994)S.Lee,(1995),optimum design and selection of heat sink, IEEE semi thermo symposium.experimentally studied the effect of flow bypass on longitudinal fin heat sinks.
2. Yuan et al. (1996) studied flow bypass effects on straight fin heat sinks in a rectangular duct by computational fluid dynamics modelling.
3. Simons and Schmidt (1997) proposed a simple hydrodynamic model to predict the inter-fin velocity of a plate fin heat sink by applying mass
4. Sultan, 2.Rodgers and Evely (2003) indicated that computational fluid dynamics software can be a great tool to substantially predict the temperature distribution, A lot of systems use a forced flow regime due to the fact that quite fast cooling of the electronic devices is needed.
5. Leon et al. (2004), who solved the numerical equations with the implementation of ANSYS FLUENT program.Optimum heat sink Design and Selection at IJAEM,2013
6. RMohan andGovindarajan,2011)springer, journalof mechanical science technology,&KSME
7. Shashank Deorah “CFD Analysis of a vertical tube having internal fins for the Natural
8. Yu et al. performed concluded that thermal resistance of plate-fin heat sinks is lower by approximately 30% than that of pin fin heat sinks with the same blowing velocity.

AUTHORS PROFILE



Srinivas.D. is Prof and HOD-mechanical engineering,inreputedengineeringcollege,in Karnataka.He isResearch Scholar at JAIN(deemed tobeuniversity).Bangalore.Karnataka.Also member of American Society of Mechanical engineering.(ASME),NY,USA. Also member of professional bodies in India,MIE,ISTE.I was a top contributor at ASME. Hestudied,BE(mech),ME(TPE),in reputed engineering college PDACE,Kalaburgi in karnataka.Ihave totally nearly 25yrs of Teaching experience in Engineering colleges and 05yrs in Industry.

