

SVPWM based Transformer less Wind Energy Conversion System for 3 phase 3 level Neutral Point Clamped Inverter

Palanisamy R, Shaurya Misra, Deepak Kulhar

Abstract—The Multilevel inverters are highly being used in high-power medium voltage applications due to their better performance compared to two-level inverters. Among various types of multilevel inverters, neutral point clamped three-level inverter (NPCTLI) is suitable for a Transformerless grid-connected wind energy conversion system. As it avoids leakage currents, common mode voltage and capacitor balancing problems. Split inductor is used to interconnect inverter with grid connected system which avoids the usage of transformer. While using split inductor neutral point clamped multilevel inverter, shoot-through problems are producing in the bridge legs of an NPC-TLI. Space Vector pulse width modulation Control (SVPWMC) offers an excellent current control and improved voltage performance to NPCTLI, which reduced amount of total harmonic distortion present in system. The proposed topology guarantees for no shoot-through possibility and capacitor balancing problem. The new topology is referred to as split-inductor NPCTLI (SI-NPCTLI). Finally, the simulation results of a proposed SI-NPCTLI system verified using MATLAB SIMULINK.

Index Terms—Wind energy conversion system, PMSG, Space Vector pulse width modulation (SVPWM), Neutral point clamped three-level inverter (NPCTLI).

I. INTRODUCTION

Wind energy systems are in rapid use all over the world owing to technology advancements [1] which are the fastest developing in renewable energy sector [2]. Wind is available aplenty to be harnessed and environmentally viable. To further make it economically viable improvements in the electrical system efficiency [2] mainly in the power electronic converter control is discussed. A permanent magnet synchronous generator (PMSG) is favourable in comparison to a FESG (Field excited induction generator) for a wind turbine since it increases the system efficiency, reduces need for maintenance and the need for a gear assembly in a turbine can be eliminated as well [3].

Excitation losses are eliminated in PMSG, which are indispensable in an induction machine. Due to the absence of mechanical failure in PMSG based Wind energy conversion system (WECS) the system failure rate is reduced. The system is applicable for medium voltage and high power applications. The rectified dc voltage is fed to a boost converter, which boosts the input signal voltage and feeds an amplified dc voltage to the MLI. It consists of an inductor, a switch (IGBT), capacitor and diode. The energy stored in the inductor adds up with the input source voltage when the switch is turned on and the voltage across the capacitor is built up by quickly cycling the switch. This way more energy can be fed to the inverter. The blocking diode prevents reverse capacitor discharging through the switch.

A Multi Level Inverter (MLI) or specifically a three level inverter reduces the voltage stress on the switches [4] and also the Total Harmonic Distortion (THD). The multiple voltage levels with smaller voltage changes, closer in resemblance to sinusoidal waveform, reduces stress on the motor [5-8]. Only half the dc link voltage is available across the off state switches due to clamping diodes, thus facilitating high power output from a lower voltage rated inverter [5]-[8]. The additional level is introduced by the NPC (Neutral point clamped) topology where two clamping diodes are connected in parallel with the switches to the DC bus neutral point, which is connected to the output through the diodes [9].

A transformer based grid connected system is bulky, costly, cause grid current distortion and gives rise to leakage current [10] These problems are overcome in a Split inductor (SI) based system which is used. For controlling the Split Inductor-NPC-MLI Space Vector Pulse Width Modulation (SVPWM) technique is employed. It is advantageous as it increases output efficiency and minimizes the Total Harmonic Distortion. It uses redundant switching states which are not available in sinusoidal PWM. This technique is used to minimize total harmonic distortion in the power fed to the grid.

II. WIND ENERGY CONVERSION SYSTEMS (WECS)

Wind energy conversion systems have been in the global power scenario since more than a decade ago. Though fossil fuels still continue to be the chief

Manuscript published on 28 February 2015.

* Correspondence Author (s)

Palanisamy.R, SRM University, Kattankulathur, India
Shaurya Misra, SRM University, Kattankulathur, India
Deepak Kulhar, SRM University, Kattankulathur, India

© The Authors. Published by Blue Eyes Intelligence Engineering and Sciences Publication (BEIESP). This is an [open access](https://creativecommons.org/licenses/by-nc-nd/4.0/) article under the CC-BY-NC-ND license <http://creativecommons.org/licenses/by-nc-nd/4.0/>.

SVPWM based Transformer less Wind Energy Conversion System for 3 phase 3 level Neutral Point Clamped Inverter

energy sources worldwide, but they raise environmental concerns[11] and also their reserves are limited, On the other hand wind energy is practically unlimited and devoid of any

harmful emissions. Necessity of alternate fuels and interest in clean technology[11] and rising consumer energy demand encourages development in the renewable energy sector.

Onshore wind generation and projection

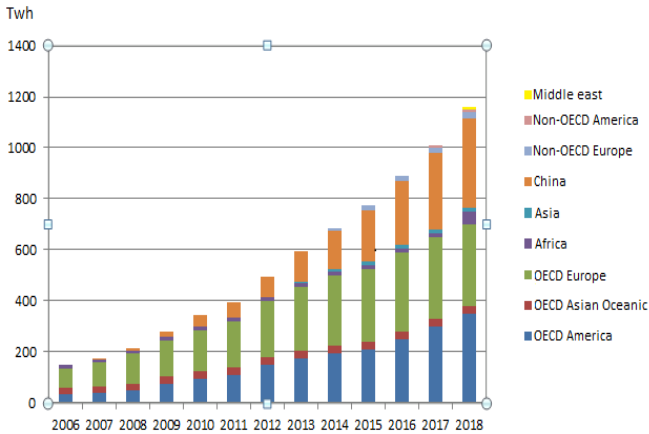


Fig.1

Offshore wind generation and projection

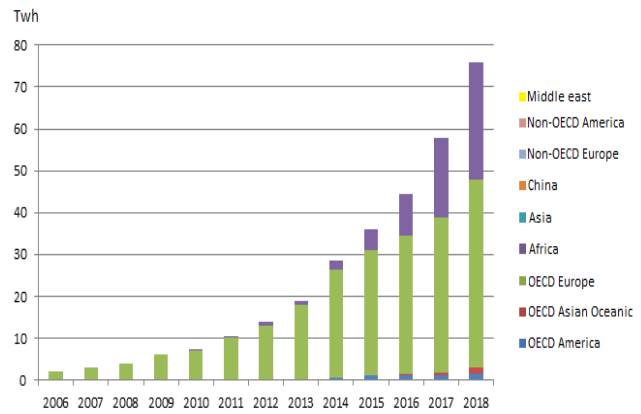


Fig.2

Fig.1&2 IEA(2013), Medium Term Renewable Energy Market Report 2013,OECD/IEA, Paris

The Wind turbines are the first step in the conversion of mechanical wind energy to an electrical output. They have three blades designed to harness wind energy. The output torque of this turbine is fed to the PMSG (Permanent Magnet Synchronous Generator).A PMSG machine having large number of poles can also be used without a gearbox [12].

PMSG's are compact and tough, need less maintenance and eliminate the need for an excitation field [12]. Low cost permanent magnets for them are easily available [13].These factors make PMSG's a feasible choice for MV-high power applications. But due to output voltage fluctuations in this turbine-PMSG system, it cannot be directly connected to the grid. For this, and to increase the power output of the wind energy system[14],power electronic converters are used.

A Split Inductor based NPC-MLI configuration of power converters can be used to connect the generator to the grid. But this topology has low efficiency [14]. SVPWM control technique for the power electronic switches solves this problem and also enhances the power quality fed to the grid.

III. NPC 3-LEVEL INVERTER

One of the multilevel arrangements that has gained much notice and widely used is the Neutral-Point-Clamped multilevel inverter or also known as Diode Clamped multilevel inverter. This structure was first proposed by Nabae [8]. Fig.3 shows the 3-level NPC inverter. Fundamentally, NPC multilevel inverters combine the small step of staircase output voltage from several levels of DC capacitor voltages. A k-level NPC inverter consists of (k-1) capacitors on the DC bus, 2(k-1) switching devices per phase and 2(k-2) clamping diodes per phase. The DC bus voltage is split into 3 levels by using 2 DC capacitors, C₁ and C₂. Each capacitor has V_{dc}/2 volts and each voltage stress will be limited to one capacitor level through clamping diodes.

The number of levels can be comprehensive to a higher level by additional switching devices and with these

additions, the inverter will be able to achieve higher AC voltage, producing more voltage steps that will be approaching sinusoidal with minimum harmonics distortion. During inverter operations, the switches near the centre tap are switched on for a longer period compared to the switches further away from the centre tap as given in the switching states in Table. As the switch is further away from the centre tap the switching time is shorter. Another difference between the conventional 2-level and multilevel NPC is the clamping diode. In case of 3-level NPC inverter, clamping diode, D₁ and D₄ clamped the DC bus voltage into three voltage level, +V_{dc}/2, 0 and -V_{dc}/2. The number of freewheeling diodes (d_f) per phase, the number of clamping diodes (d_c) and number of DC capacitance can be calculated by using Eqs.(1) and (2) respectively.

$$d_f = 2(k - 1) \quad (1)$$

$$d_c = (k - 1)(k - 2) \quad (2)$$

$$c = k - 1 \quad (3)$$

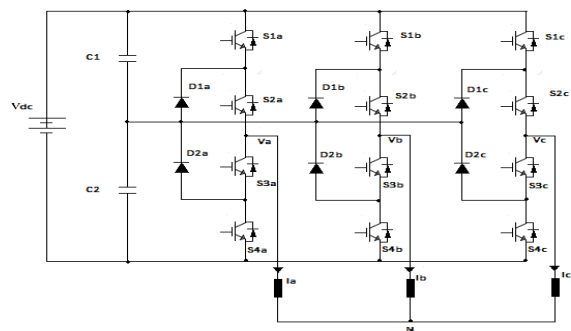


Fig.3. Three level NPC inverter

The NPC multilevel inverter includes the advantages for a high m-level, the distortion level of the harmonics content is so low that the use of filter is redundant. Constraints obligatory on the switches are low because the switching frequency may be lower than 500Hz. Reactive power flow can be prohibited and the efficiency is high because all devices are switched at fundamental frequency.

IV. SPLIT INDUCTOR BASED NPC-MLI

Transformers are required for synchronizing the inverter output with the grid requirements. But these systems are complex and costly. They increase leakage current in the system causing grid current distortion and safety problems [15]. Transformer less systems reach an efficiency upto 97% [15] and are ideal for Distributed Power Generation Systems (DPGS). In addition, they reduce the size, complexity, weight of the inverter [10].

I. Takahashi et al [16] neutral point clamped three-level inverter (NPCTLI) topology is widely applied in transformer less systems. It reduces the dc component injected to the grid. Transformerless systems use split inductors between the dc link of the inverter and the neutral point of the grid.

A. Modes of operation of switches

In mode 1, the switches S2a,S3a of leg 1; S2b,S3b of Leg 2; S2c,S3c of leg 3 are in ON state and other switches are turned OFF .The bridge output voltage is zero is shown in fig.4a.

In mode 2, the switches S3a,S4a of leg 1; S3b,S4b of Leg 2; S3c,S4c of leg 3 are in ON state and other switches are turned OFF .The bridge output voltage is $-3V_{dc}/2$ zero is shown in fig.4b.

In mode 3, the switches S3a,S4a of leg 1; S1b,S2b of Leg 2; S3c,S4c of leg 3 are in ON state and other switches are turned OFF .The bridge output voltage is $-V_{dc}/2$ zero is shown in fig.4c.

In mode 4, the switches S3a, S4a of leg 1; S2b, S3b of Leg 2; S2c,S3c of leg 3 are in ON state and other switches are turned OFF .The bridge output voltage is $-V_{dc}/2$ is shown in fig.4d.

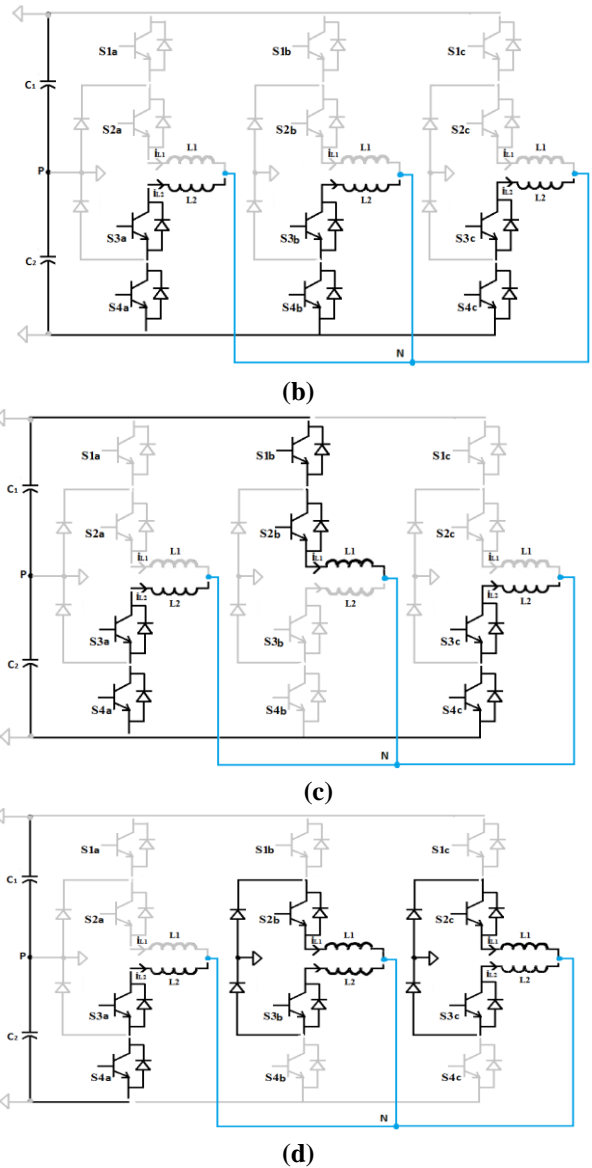


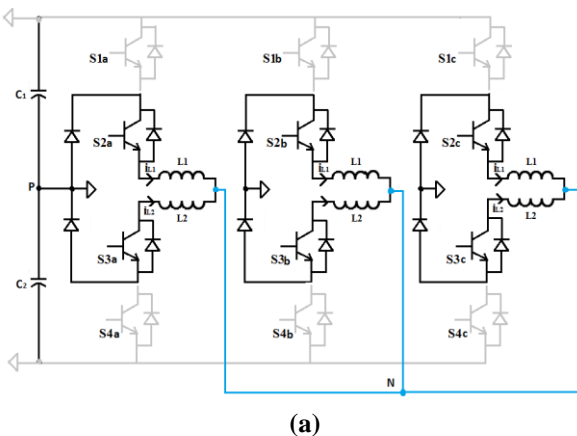
Fig.4 Modes Of Operation (a) Model1 (b) Mode2 (c) Mode3 (d) Mode4

Table.1. Modes of Operation of SI-NPC-MLI

Modes	Leg 1	Leg 2	Leg 3	Inverter Output
Mode 1	S2a,S3a	S2b,S3b	S2c,S3c	0
Mode 2	S3a,S4a	S3b,S4b	S3c,S4c	$-3V_{dc}/2$
Mode 3	S3a,S4a	S1b,S2b	S3c,S4c	$-V_{dc}/2$
Mode 4	S3a,S4a	S2b,S3b	S2c,S3c	$-V_{dc}/2$

V. SVPWM (SPACE VECTOR PULSE WIDTH MODULATION)

For an MLI to operate properly, proper selection of switching states and their sequence is essential. In SPWM technique, only half of dc link voltage can be obtained as the peak for fundamental component [17].



In comparison, SVPWM gives more fundamental voltage and better harmonic reduction. In an NPC inverter, due to current at neutral [18], the voltage across the capacitors is not divided equally which compromise the output voltage waveform and produces unequal stress on the power electronic devices[18].

Neutral point balancing needs proper selection of switching states and utilization of on times for the switches. SVPWM technique can be used to achieve that. It is also suitable for DSP [19] implementation and improved dc link utilization. SVPWM deals directly with switching states and their sequence. The space vector diagram of a three level inverter consists of six sectors, each having four triangles.[20]For an n-level inverter, n switching states are possible. Hence there are twenty seven switching states for a three level inverter. The tip of switching vector is located in the triangles as a point in the complex space (α, β).

The following are the salient features of the proposed scheme

1) The on-time calculation is simple due to the use of two levels SVPWM. The on-time calculation equations do not change with the position of reference vector like the traditional approach. So there is no need for any lookup tables as well.

2) In the space vector diagram of an n-level inverter, the triangle where the reference vector is located is identified as integer j using a simple algebraic expression. We call j as triangle number, it implies the jth triangle among the (n - 1)² triangles in a sector. Any switching sequence can be executed with respect to triangle j, leading to a simplicity and flexibility of optimizing the switching sequence.

3) The proposed scheme can be used for any n-level (n ≥ 3) inverter without any significant increase in computations.

4) The proposed method can be easily implemented using a commercially available motion-control DSP or microcontroller, which normally supports only two-level modulation. The scheme is explained for a three-level inverter and then generalized to include any level. Experimental results are provided for three-level and five-level inverters.

A. Switching time calculations

SVPWM is to compensate the required volt-seconds using discrete switching states and their on-times.

Traditionally, in order to determine the on-times for a triangle of an n-level inverter, three simultaneous equations are solved. However, classical two-level space vector geometry can be used for on-time calculation for a multilevel SVPWM. Fig shows the space vector diagram of a two-level inverter. Every sector is an equilateral triangle of unity side and (h= √3/2) is the height of a sector. On-time calculation for any of the six sectors Si, i = 1, 2,....6 is same, so let us consider the operation in sector 1. On-time calculation is based on the location of the reference vector within a sector. For the sector 1 in Fig. 5, the volt-second balance is given by,

□ The nearest three vector (NTV) scheme is used for the capacitor balancing.

□ The reference can be located in the any of the sub triangle Δ₁ (V_{Z0} V_{S1} V_{S2}), Δ₂ (V_{S1} V_{MI} V_{S2}), Δ₃ (V_{S2} V_{MI} V_{L2}), Δ₄ (V_{S1} V_{MI} V_{L1}).

□ The duty ratios are

$$\delta_a = V_\alpha - V_\beta / \sqrt{3} \tag{4}$$

$$\delta_b = V_\beta / m \tag{5}$$

$$\delta_0 = 1 - \delta_a - \delta_b \tag{6}$$

The nearest vector redundancy scheme is the proposed technique used to obtain the capacitor balance in the modulation index below (0 < m < 0.6). Depend upon the point the participation of the switching vector can be utilized. By the redundant state in (SV) the positive and negative phase currents cancelled. Due to that the capacitor balance can be achieved.

These three vectors could be used to synthesis the sampled reference voltage vector.

$$V^* \delta_{S1} + V^* \delta_{S2} + V^* \delta_{M1} = V^* \tag{7}$$

$$\delta_{S1} + \delta_{S2} + \delta_{M1} = 1 \tag{8}$$

And duty cycles calculations.

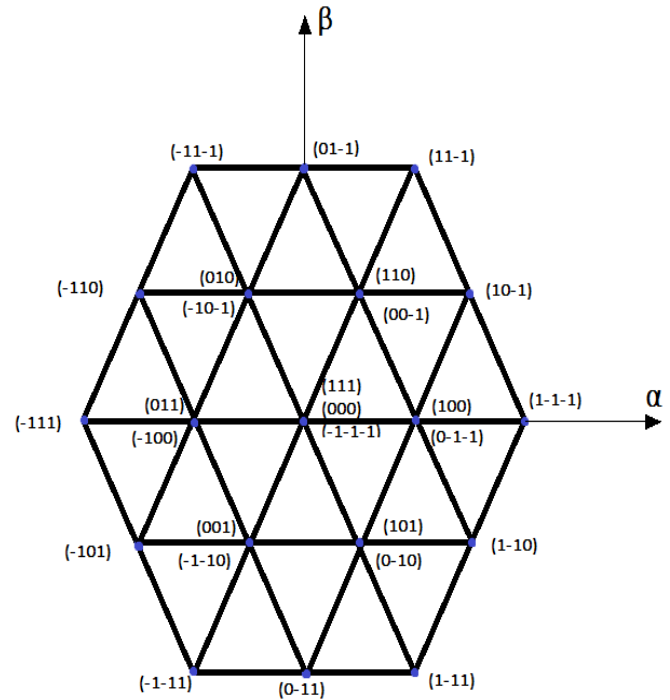


Fig.5 SVPWM Switching States

VI. CONTROL STRATEGY

The entire wind energy conversion system is as shown I figure 6 above. The blades of the turbine capture wind energy and transfer energy to the turbine rotor which is connected to a common shaft connecting the PMSG. PMSG converts this mechanical energy to three phase ac voltage which fluctuates according to the wind speed. This three phase ac voltage is converted into dc by a three phase rectifier. Output dc voltage is fed to a boost converter which boosts the input signal voltage and feeds an amplified dc voltage to the MLI. The NPC topology of the MLI blocks the dc component from entering the grid and provides feasible application of control technique for the switches. SVPWM technique uses redundant switching states to locate a switching vector corresponding to a reference vector in α, β plane. It is highly efficient and it reduces Total Harmonic Distortion in the output.



The inverter output is a three level stepped wave which is converted to a sinusoid by using split inductors. They omit the need for a transformer and reduce the circuit complexity, size, cost and accurately synchronize the inverter to the grid.

The output waveform obtained is a pure three phase sinusoid with negligible THD is shown in the fig.6.

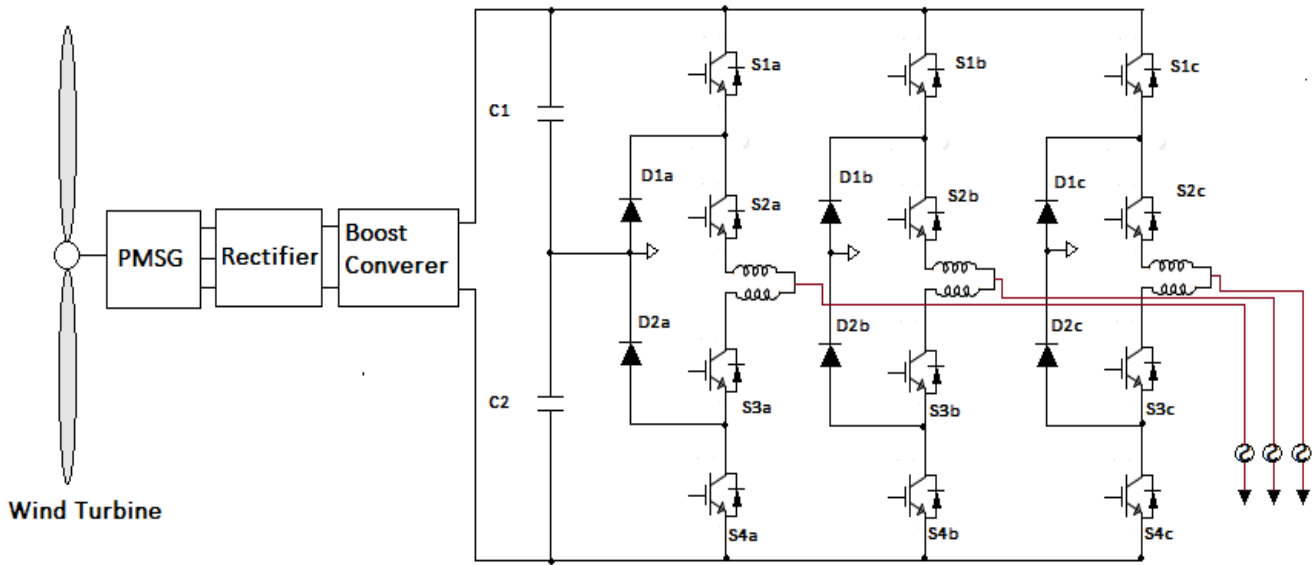


Fig.6. Control Strategy for the WECS

VII. SIMULATION RESULTS

The simulation system was setup in Matlab11.b. The motor is a 1HP induction motor with a rated voltage of 300V and current of 5A. An open loop constant V/f control is used to regulate the motor speed and the dc-link voltage is set at 300V. The performance of wind turbine system is tested and is shown in Figure 7 shows the output three phase voltage waveform of PMSG. The voltage generated by it is 260V. The dc voltage output of rectifier is 295V as shown in figure 8. Using boost converter, the voltage was increased to 600V as shown in figure 9. The three level step voltage of the NPC inverter is as obtained in figure 10. The three phase inverter current waveform is also shown. Final Output Grid voltage and current is as shown in figure 11. It can be seen that the stepped voltage is fully converted to sinusoidal waveform and the grid current waveform is also shown. Figure 12 shows two phases of split inductor current. Each phase is at an angle of 120 degrees from the other. The Total Harmonic Distortion in the output grid voltage waveform is 0.00% as shown in figure 13. Total Harmonic Distortion in the output grid current waveform is 5.9% as shown in figure 14.

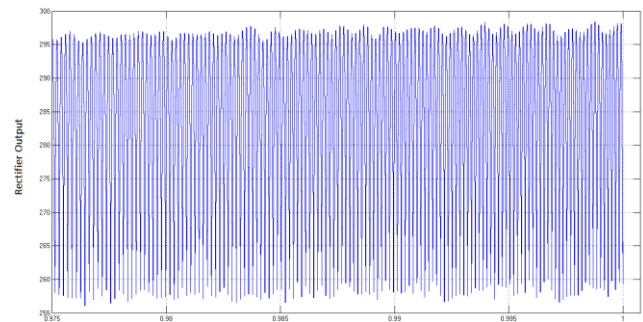


Fig.8 Rectifier Dc output Voltage

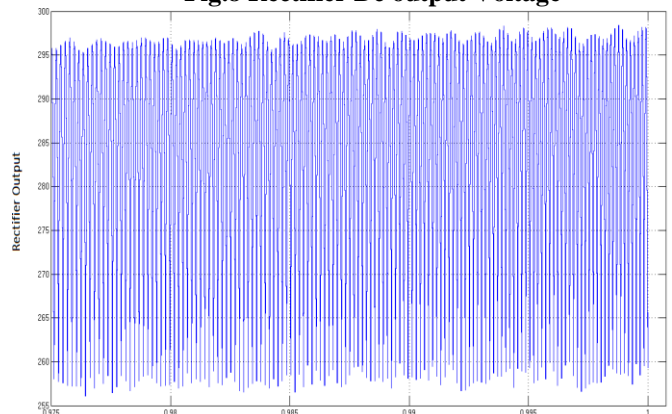


Fig.9 Boost Converter Output

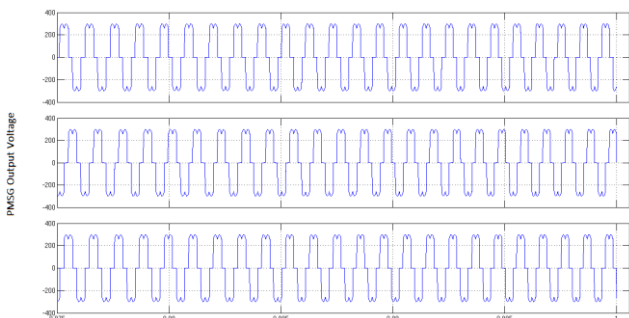


Fig.7 Three Phase Output Voltage of PMSG



SVPWM based Transformer less Wind Energy Conversion System for 3 phase 3 level Neutral Point Clamped Inverter

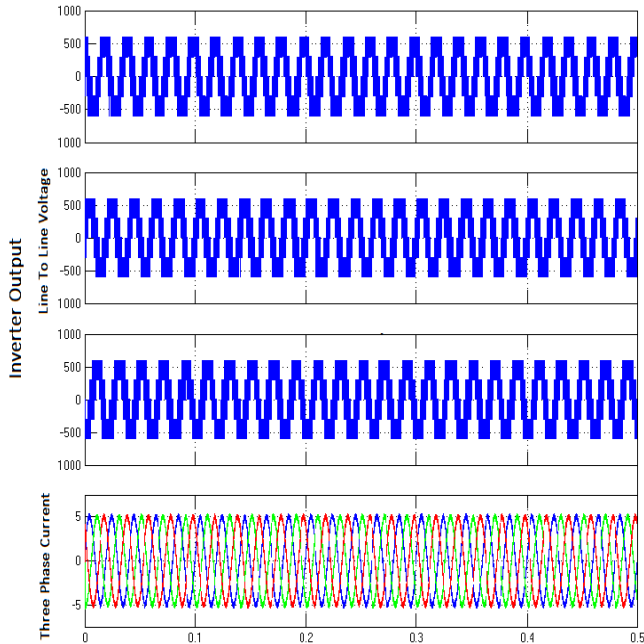


Fig.10. Output voltage & current of NPC inverter

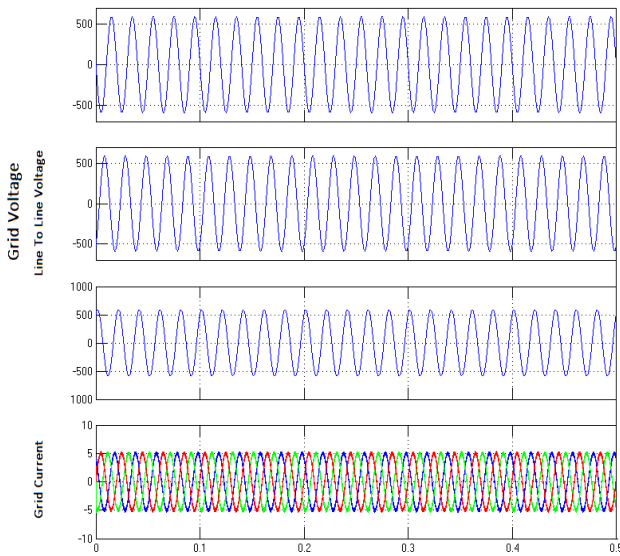


Fig.11 Output Grid Voltage and Current

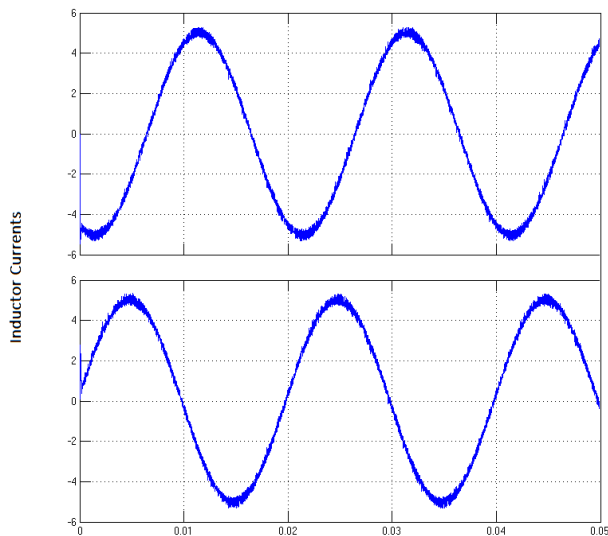


Fig.12 Split inductor current

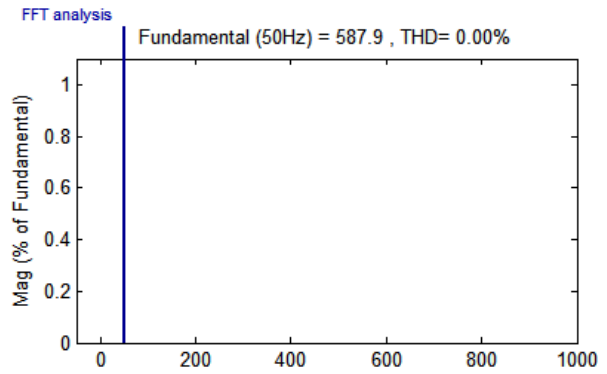


Fig.13 Total Harmonic Distortion in output voltage

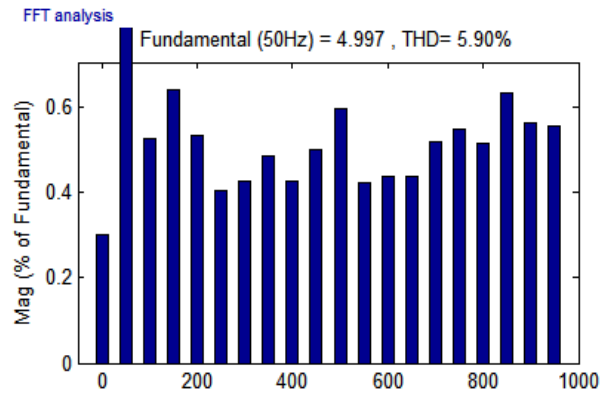


Fig.14 Total Harmonic Distortion in output current

REFERENCES

- [1] H. Berthold, M. Durstewitz and K. Rohrig, "Reliability of wind turbines," Wind Energy, Springer Berlin Heidelberg, 2007, pp. 329-332.
- [2] Z. Chen, J. M. Guerrero, and F. Blaabjerg, "A review of the state of the art of power electronics for wind turbines," IEEE Trans. Power Electron., vol. 24, no. 8, pp. 1859–1875, Aug. 2009.
- [3] Benelghali, Seifeddine, M. E. H. Benbouzid, and Jean Frédéric Charpentier. "Comparison of PMSG and DFIG for marine current turbine applications." Electrical Machines (ICEM), 2010 XIX International Conference on. IEEE, 2010..
- [4] Ning-Yi Dai, Man Chung Wong, Ying-Duo Han, "Application of a Three level NPC Inverter as a Three Phase Four Wire Power Quality Compensator by generalized 3DSVM", IEEE Trans. Power Electron., VOL 21, NO 2, March 2006
- [5] Lee, Meng Yeong. Three-level neutral-point-clamped matrix converter topology. Diss. University of Nottingham, 2009.
- [6] M. Belfi, J. Sung, S. Bell and G. Skibinski, "Effect of surge voltage rise-time on the insulation of low voltage machines fed by PWM converters," Proceedings of IEEE Industry Application Society Conference, pp. 239 – 246, Oct. 1997.
- [7] D. Busse, J. Erdman, R. J. Kerkman, D. Schlegel and G. Skibinski, "System electrical parameters and their effects on bearing currents," IEEE Transactions on Industry Applications, vol. 33, No. 2, March/April 1997.
- [8] T. Meynard and H. Foch, "Multi-level conversion: high voltage choppers and voltage source inverters," Proceedings of IEEE Power Electronic Specialist Conference, vol. 1, pp. 397 – 403, July 1992.
- [9] Sriharirao Namballa & T Vamsee Kiran "A Space Vector PWM Scheme for Neutral Point Clamped Multilevel Inverters" International Journal of Power System Operation and Energy Management ISSN (PRINT): 2231 – 4407, Volume-1, Issue-4, 2012

- [10] R. Iatha, C. Bharatiraja, R. Palanisamy, sudeepbanerji, Subhransu Sekhar Dash, Hysteresis Current Controller based Transformerless Split Inductor-NPC - MLI for Grid Connected PV- System, *Procedia Engineering*, Volume 64, 2013, Pages 224-233, ISSN 1877-7058, <http://dx.doi.org/10.1016/j.proeng.2013.09.094>.
- [11] Blaabjerg, Frede, et al. "Overview of control and grid synchronization for distributed power generation systems." *Industrial Electronics, IEEE Transactions on* 53.5 (2006): 1398-1409.
- [12] Camara, M. S., et al. "Permanent Magnet Synchronous Generators for offshore wind energy system linked to grid-modeling and control strategies." *Power Electronics and Motion Control Conference and Exposition (PEMC), 2014 16th International. IEEE, 2014*.
- [13] Blaabjerg, Frede, et al. "Power electronics in wind turbine systems." *Power Electronics and Motion Control Conference, 2006. IPEMC 2006. CES/IEEE 5th International. Vol. 1. IEEE, 2006*.
- [14] Ma, Ke, Marco Liserre, and Frede Blaabjerg. "Comparison of multi-MW converters considering the determining factors in wind power application." *Energy Conversion Congress and Exposition (ECCE), 2013 IEEE. IEEE, 2013*.
- [15] O. Lopez, R. Teodorescu, F. Freijedo, and J. Doval-Gandoy, —Eliminating ground current in a transformerless photovoltaic application, in *Proc. IEEE Power Eng. Soc. Gen. Meet.*, pp. 1–5, Jun. 2007,
- [16] A. Nabea, I. Takahashi, and H. Akagi, —A new neutral-point-clamped PWM inverter, *IEEE Trans. Ind. Appl.*, vol. 17, no. 5, pp. 518–523, Sep./Oct. 1981.
- [17] C. Bharatiraja, S. Jeevananthan, R. Latha, FPGA based practical implementation of NPC-MLI with SVPWM for an autonomous operation PV system with capacitor balancing, *International Journal of Electrical Power & Energy Systems*, Volume 61, October 2014, Pages 489-509, ISSN 0142-0615, <http://dx.doi.org/10.1016/j.ijepes.2014.03.066>.
- [18] N. Celanovic and D. Boroyevich, "A comprehensive study of neutral point voltage balancing problem in three level neutral point clamped voltage source pwm inverters," *Power Electronics, IEEE Transactions on*, vol. 15, pp. 242 – 249, March 2000.
- [19] R. Kanchan, M. Baiju, K. Mohapatra, P. Ouseph, and K. Gopakumar, "Space vector pwm signal generation for multilevel inverters using only the sampled amplitudes of reference phase voltages," *IEE Proc.-Electr. Power Appl.*, vol. 152, pp. 297 – 309, Mar. 2005.
- [20] Gupta, Amit Kumar, and Ashwin M. Khambadkone. "A space vector PWM scheme for multilevel inverters based on two-level space vector PWM." *Industrial Electronics, IEEE Transactions on* 53.5 (2006): 1631-1639.



R. Palanisamy was born in Karuppampalayam, Karur, Tamil Nadu, India in 1990. He obtained the B.E Degree in EEE from M. Kumarasamy engineering college (Anna University Coimbatore), Karur, Tamil Nadu, India in 2011 and received the M.Tech degree in Power Electronics and Drives from SRM University, Kattankulathur, Tamilnadu, india in 2013. Presently working as Assistant Professor in the Department of Electrical

Engineering, SRM University, Kattankulathur, and Chennai India. His research interests include Power Electronics Drives and Multilevel inverters, Various PWM Techniques and grid connected Photovoltaic system.



Shaurya Misra was born in New Delhi, India in 1992 .He is currently pursuing his Btech degree in EEE from SRM University, Kattankulathur, Tamil Nadu. His research interests include modeling and control of multilevel inverter applications ,renewable energy conversion systems, dc-dc boost converters and PWM techniques.



Deepak Kulhar was born in Chirawa, Rajasthan, India in 1994. He is currently pursuing Btech degree in EEE from SRM University, Kattankulathur, Tamil Nadu. His research interests are PWM inverters and power electronic converters.